



## RETAILER BULLETIN

|  |                  |   |                                |   |              |                                  |                  |   |           |  |             |
|--|------------------|---|--------------------------------|---|--------------|----------------------------------|------------------|---|-----------|--|-------------|
| <b>1 - APRIL - 2019</b>                          |                  |   | <b>BULLETIN NO: 192004.002</b> |   |              | <b>DEPT: Network Development</b> |                  |   |           |  |             |
| <b>AUDIENCE:</b>                                 | DEALER PRINCIPAL | X | SALES MGR                      | X | SALES GUIDES |                                  | SERVICE MGR      | X | TECHS     |  | PARTS STAFF |
|  | CENTRE MANAGER   | X | BUSINESS MGR                   |   | OFFICE MGR   |                                  | SERVICE ADVISORS |   | PARTS MGR |  | WARRANTY    |
| <b>SUBJECT: Jaguar Land Rover St. Petersburg</b> |                  |   |                                |   |              |                                  |                  |   |           |  |             |

Jaguar Land Rover North America proudly announces the recent completion of the Jaguar Land Rover St. Petersburg ARCH facility. Congratulations to Crown Automotive Group and the entire team at Jaguar Land Rover St. Petersburg.

Dealer Principal: Dwayne Hawkins  
 President / COO: Jim Myers  
 Exec. VP Sales: Joe Lamphier  
 Centre Manager: Michal Niezbecki

### Facility Information:

Address: 6001 34<sup>th</sup> St. N. St. Petersburg, FL 33714  
 Building Size: 48,803 Sq Ft  
 Showroom Display: 8 Vehicles  
 Service Bays: 17 Service Bays

### Notable Features:

Jaguar Land Rover St. Petersburg is a renovation of a former Mercedes-Benz dealership and is strategically located off of the heavily travelled 34<sup>th</sup> Street, offering great visibility. The facility features a personalization studio, barista bar, 8-car showroom, and a 17-service bay workshop complete with ARCH finishes.



QUESTIONS ABOUT THIS BULLETIN? PLEASE CONTACT:

Stephanie Lutz  
 Network Operations Manager  
 slutz@jaguarlandrover.com



QUESTIONS ABOUT THIS BULLETIN? PLEASE CONTACT:

Stephanie Lutz  
Network Operations Manager  
slutz@jaguarlandrover.com



QUESTIONS ABOUT THIS BULLETIN? PLEASE CONTACT:

Stephanie Lutz  
Network Operations Manager  
slutz@jaguarlandrover.com

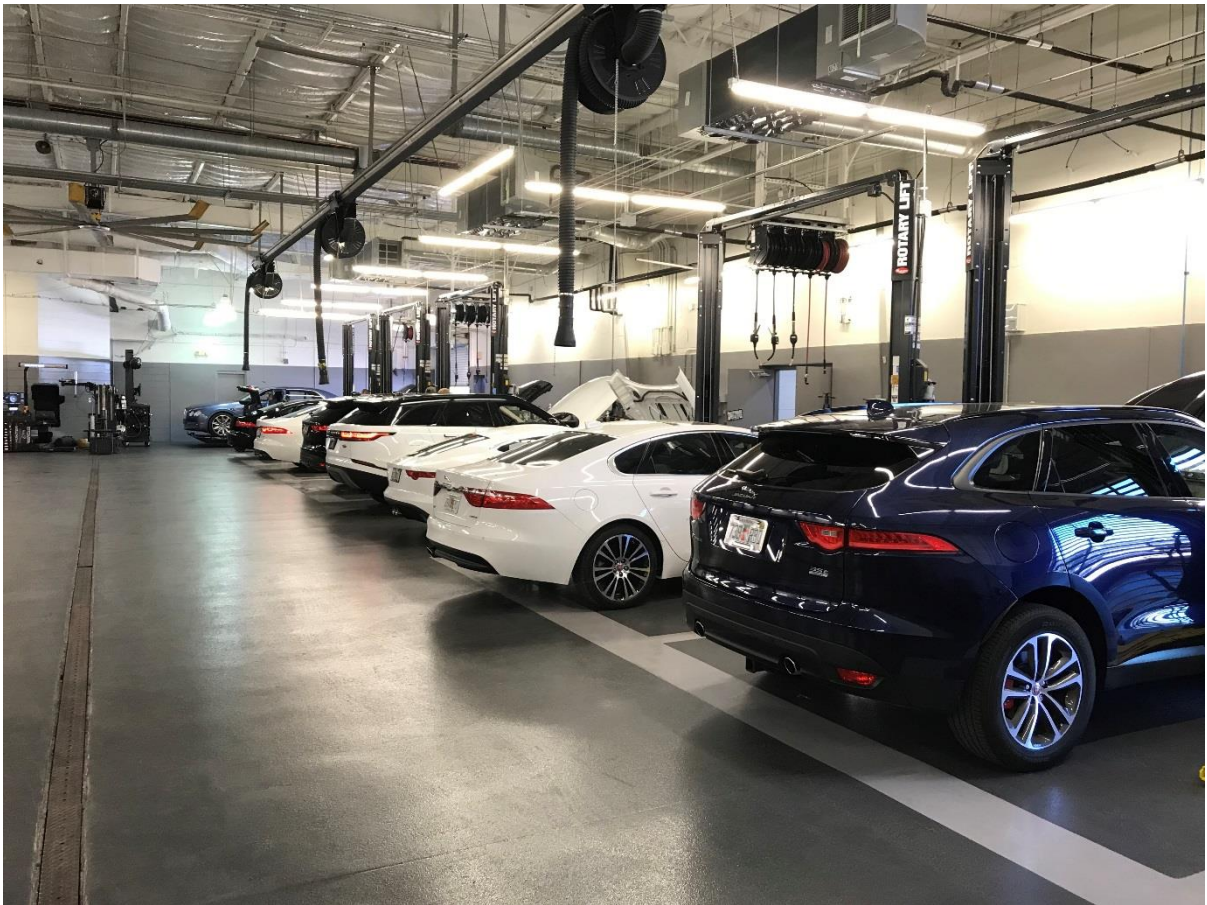
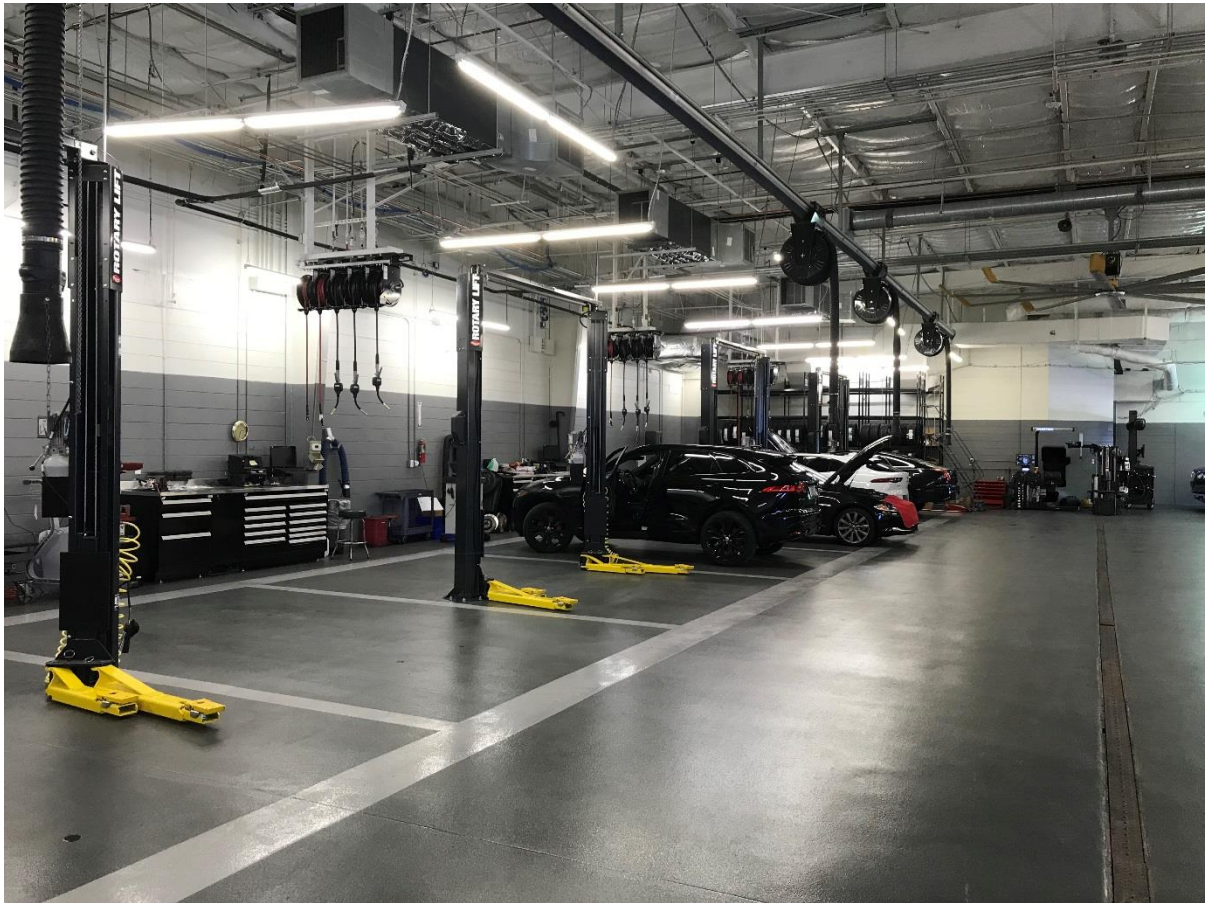




QUESTIONS ABOUT THIS BULLETIN? PLEASE CONTACT:

Stephanie Lutz  
Network Operations Manager  
slutz@jaguarlandrover.com





---

QUESTIONS ABOUT THIS BULLETIN? PLEASE CONTACT:

Stephanie Lutz  
Network Operations Manager  
slutz@jaguarlandrover.com